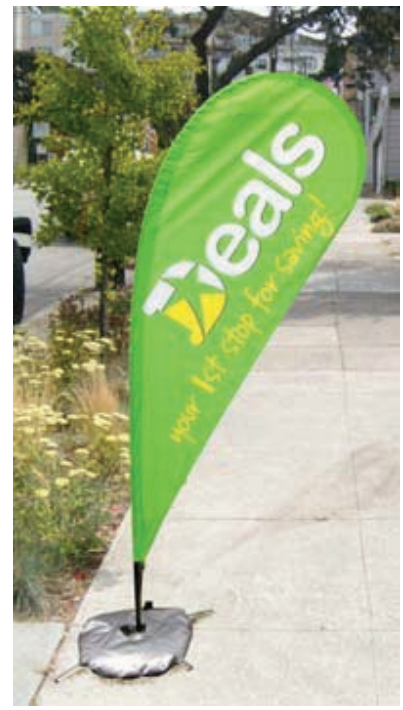


Completed Adverflag® Drop & Sail Flags *See page 2 for step by step instructions*



Hard Surface Installation



Landscape Installation



Scan to view our video instructions!

5 Tech View Drive, Cincinnati, OH 45215
sales@adverflag.com P: 800.837.6306 F: 513.588.3737

DO NOT TELESCOPE POLE - DO NOT Install or Fly Flags in wind OVER 20 mph

Step 1: Please remove all parts from boxes & separate pieces. Number of pole pieces may vary depending on size. Materials for final install in the ground vs hard surface may vary - please reference **Step 3** for either hard surface or ground install instructions.

You will need:

- Stackable Poles
- Bungee Cord
- Flag



Step 2: Assemble poles by placing smaller end into larger end - please see picture below.

NOTE: This is a stackable pole. It is NOT a telescoping pole



Step 3: Are you installing on a Hard Surface or in the Ground? Please reference the correct information below based on your specific flag materials.

Landscape Installation

You will need:

- Ground Screw & Metal Arm

Place metal arm in the opening on the ground screw & turn clockwise until it is screwed firmly into the ground.



Hard Surface Installation

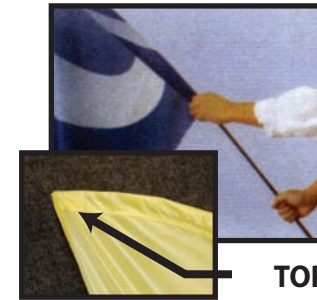
You will need:

- Crossbase Sidewalk Stand
 - Water / Weight Bag (filled with 3 gallons of water or 25lbs. of pea gravel. Pea gravel not included).
- Position the arms of the base to create an 'X' shape. Place the filled water / weight bag on top for added stability.

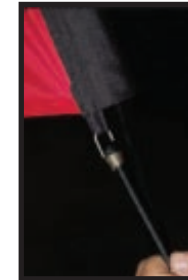


Step 4: Slide pole into sleeve on the flag and hold firmly. Hook bungee cord to the tab at the end of the flag sleeve.

Note: Be certain the tip of the pole is fully inserted into the strengthened TOP END of the flag pole sleeve.



TOP END



Bungee Cord Attachment

Step 5: FINAL STEP See Below for specific instructions on final step for either a Landscape or Hard Surface Install.

Ground Installation

While holding firmly on the pole, place the bottom end of the pole on the swivel at the top of the ground screw. Pull the bungee down and hook onto ring on the ground screw to secure the flag.



Hard Surface Installation

Align the 2 tabs at the base of the stand. Place the bottom end of the pole on the swivel at the top of the stand. While holding the pole and the flag securely, pull the bungee down and hook through BOTH tabs on the stand to ensure stability.

